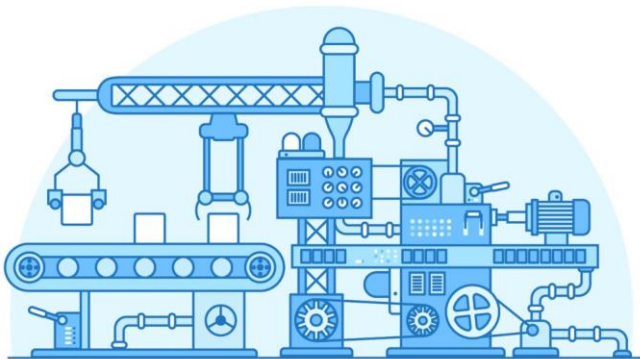




Indoor LoRaWAN Tilt Sensor

The sensor is compatible with LoRaWAN and has an ultra-long-range and ultra-long battery life. The sensor can read 3-axis movement values and send them to the LoRaWAN gateway.

If the sensor moves then, the sensor can detect the acceleration in X, Y and Z axis.



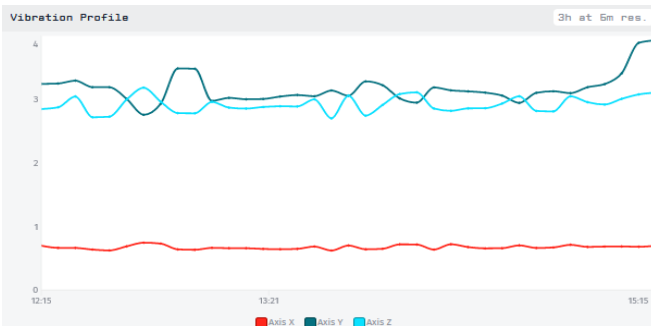
Predictive Maintenance

Application Examples:

- Automobile Security Systems
- Buildings
- Railway / Highway Tunnels
- Mining
- Handsets
- Gaming and Pointing Device
- Industrial Machines

Specifications:

- 868/915 MHz LoRaWAN protocol
- Up to 15 km communications distance
- Up to 5 years of battery life
- Low power consumption; sleep current 1.5uA
- Customizable instant status notification
- Wall mountable enclosure
- LoRaWAN Downlink Support



The sensor reports 5 parameters:

- Acceleration in X axis
- Acceleration in Y axis
- Acceleration in Z axis
- Temperature of the sensor
- Battery level

All data can be visualizing easily on the cloud